

WORDSPROUTS: JOE DOLCE

November 18, 2025



*By Sarah Schenck*

Come join us for our next WordSprouts event in partnership with the Old Stone House, featuring author Joe Dolce.

Joe will read from his new book, *Modern Psychedelics: The Handbook for Mindful Exploration*.

## Wordsprouts:

The Park Slope  
Food Coop Author  
Series presents:



## Joe Dolce

Join us to hear Joe Dolce speak about his new book **Modern Psychedelics, The Handbook for Mindful Exploration**.

As one reviewer puts it, "Dolce has created something for three distinct audiences: experienced travelers seeking new insights, 'infrequent flyers' wanting more skillful use, and the 'psychedelic curious' who need guidance."

Books will be available for purchase, and coop snacks will be served!

Wednesday November  
19, 2025

Doors: 6:45pm  
Start time: 7pm

Old Stone House  
336 3<sup>rd</sup> Street, Brooklyn

RSVP:

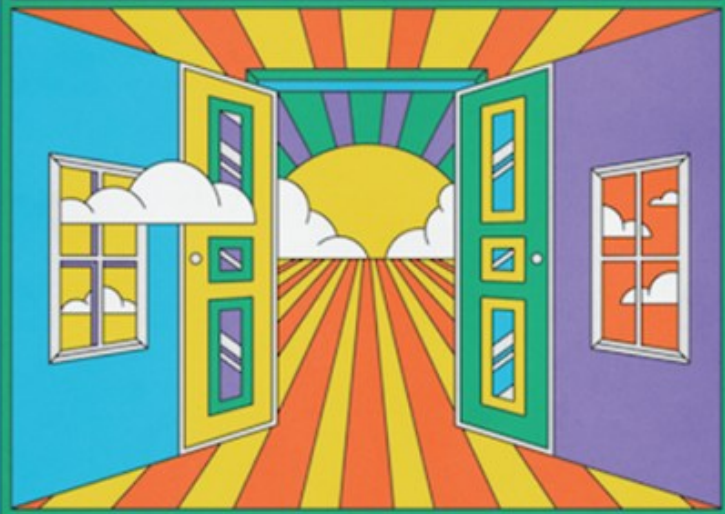
[bit.ly/november-wordsprouts](https://bit.ly/november-wordsprouts)



All events are free  
and open to all!

# MODERN PSYCHEDELICS

THE HANDBOOK FOR MINDFUL EXPLORATION



**JOE DOLCE**

FOREWORD BY JULIE HOLLAND, MD

Courtesy of Joe Dolce

WordSprouts is a long-running PSFC author series featuring Coop authors sharing their work and creative process.

Our next event:

**Author:** Joe Dolce (PSFC member)

**Literary Genre:** Mind Body Spirit/Wellness/Science

**When:** Wednesday, November 19, 2025—doors open at 6:45 p.m., event begins at 7:00 p.m.

**Where:** Old Stone House, 336 3rd Street, Brooklyn, NY 11215

**Format:** In-person only (no recording)

**RSVP:**

<https://www.eventbrite.com/e/joe-dolce-at-wordsprouts-the-park-slope-food-coop-reading-series-tickets-1413978962139?aff=oddtcreator>

Joe Dolce is a journalist and the former editor-in-chief of *Details* Magazine. He is also the author of *Brave New Weed: Adventures into the Uncharted World of Cannabis* and CEO of Joe Dolce Communications, one of the premier presentation and media training companies in New York City. He lives in Brooklyn, New York.

As one reviewer put it, “*Modern Psychedelics*, the handbook we’ve been missing, the bridge between Michael Pollan’s brilliant journalism and the practical reality of people actually using these substances. Where Pollan opened the door with *How to Change Your Mind*, Dolce provides the roadmap for what comes next: how to make informed decisions about psychedelics—and so much more. Dolce has created something for three distinct audiences: experienced travelers seeking new insights, “infrequent flyers” wanting more skillful use, and the “psychedelic curious” who need guidance.

Regarding his favorite Coop shift, Joe says: “I’m shift-fluid. When I’m tired, I like cashier; when I’m energetic, unloading trucks doubles as a workout. When I’m frazzled,

packing cheese and nuts is soothing.”

Joe’s presentation will be followed by questions from the audience, and drinks and snacks courtesy of the Coop.

The book will be available for purchase at the event for \$24.99 plus tax, or can be ordered from several online booksellers, including Amazon and Hachette.

*To get updates about WordSprouts events, check the Linewaiters’ Gazette, sign up for the mailing list at [psfcwordsprouts@gmail.com](mailto:psfcwordsprouts@gmail.com) and follow us on Instagram at [@food-coopwordsprouts](https://www.instagram.com/food-coopwordsprouts).*

*WordSprouts’s committee includes committee leader Sarah Schenck and committee members Susan Horwich and Ruthy Nachmany.*

---

## DECEMBER CONCERT SERIES

November 18, 2025

SEASON 2, FORTH CONCERT!!

# THE PSFC CONCERT SERIES

FEATURING

FRIENDSHIP EXPRESS!  
ILIA (ILUSHA)  
FRANK BASILE TRIO  
THE 49ERS



FRIDAY,  
DEC 5  
DOORS 6 PM  
SHOW 6:30; \$10

SHAPESHIFTER LAB  
837 UNION ST,  
BROOKLYN, NY 11215

Get your  
tickets here!



Join us for the next *The Park Slope Food Coop Concert Series* on Friday, December 5, at ShapeShifter Lab.

FRIENDSHIP EXPRESS!

**Set 1: 6:30-6:50 p.m.**

Performing Artist / Band: Friendship Express!

Personnel:

- Elena Moon Park - Violin & Voice
- Eva Imber - Ukulele & Voice
- James Moore - Guitar, Banjo & Voice
- Kenji Shinagawa - Guitar, Mandolin & Voice

About:

Elena Moon Park, Eva Imber, James Moore and Kenji Shinagawa offer an eclectic set of songs about food and collegiality, blending musical styles and joyful energy.

## ILIA (ILUSHA)

### **Set 2: 7-7:20 pm.**

Performing Artist / Band: Ilia (Ilusha)

Personnel:

- Ilusha Tsinadze - Guitar & Voice
- Christopher Tordini
- Allan Mednard
- Dana Lyn

About:

Georgian-born, Brooklyn-based guitarist and singer Ilusha Tsinadze explores his multi-cultural background through music, bringing together folk traditions from the Republic of Georgia with contemporary American musical art forms.

## FRANK BASILE TRIO

### **Set 3: 7:30-7:50 p.m.**

Performing Artist / Band: Frank Basile Trio

Personnel:

- Frank Basile - Baritone Saxophone
- Noah Garabedian - Bass
- Scott Neumann - Drums

About:

A straight-ahead jazz trio led by baritone saxophonist Frank Basile, featuring rhythm section staples Noah Garabedian and Scott Neumann in a dynamic, classic jazz perfor-

mance.

## THE 49ERS (TY CITERMAN AND ANDERS NILSSON)

### **Set 4: 8-8:20 p.m.**

Performing Artist / Band: The 49ers (Ty Citerman and Anders Nilsson)

Personnel:

- Ty Citerman (@tyciterman) - Electric Guitar
- Anders Nilsson (@andersnilsson) - Electric Guitar

About:

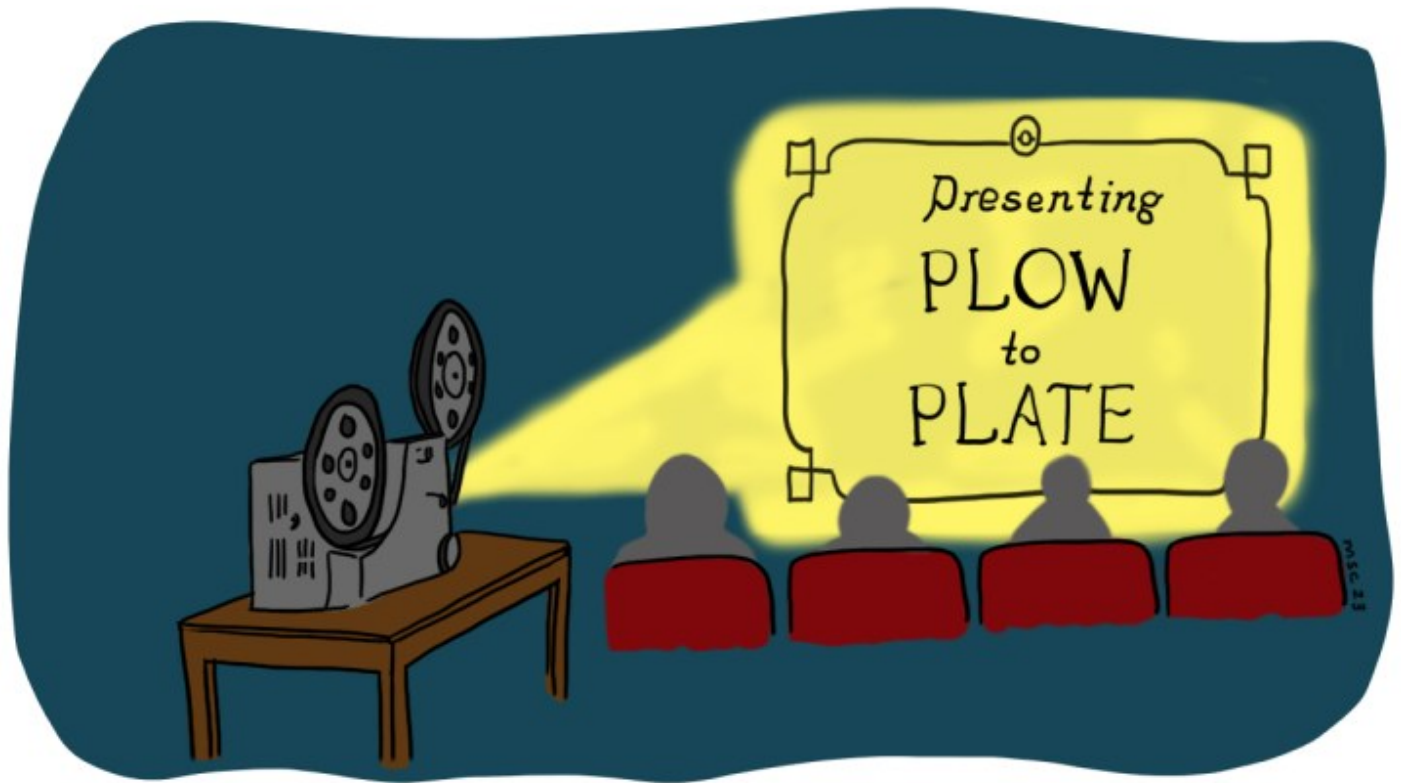
Anders Nilsson and Ty Citerman premiere new and original arrangements of Arnold Schoenberg's wildly inventive piano solo music, reimagined for two electric guitars without effects—pushing the boundaries of sonic texture and classical reinterpretation.

[Buy tickets >](#)

---

PLOW TO PLATE PRESENTS: SWEETGRASS

November 18, 2025



*By Adam Rabiner*

*Sweetgrass* is a documentary about the Allestad family's final sheep drive, the last one hosted in Montana, in the summer of 2003. Directors Ilisa Barbash and Lucien Castaing-Taylor are visual anthropologists whose style of ethnographic filmmaking bears witness to this dying tradition and way of life without resorting to voice-overs or title cards. The camera observes the action and conversations, and while the cowboys and cowgirls may speak (or sing) to the sheep, horses or dogs, they never address the filmmakers.

While sheep still graze public land and cow-people still exist, the social scientists captured the end of an era and way of life. When John Ahern and Pat Connolly drive their 3,000 sheep into the mountainous Absaroka-Beartooth Wilderness, first steering the flock down a rural town's saloon-lined main street like an animal parade, it's a journey that four generations of their ancestors partook in.

AS CONSUMERS OF WOOL OR MEAT, WE ARE FAR REMOVED FROM THE ANIMALS.

OUR SWEATER OR LAMB CHOP IS SIMPLY A COMMODITY TO BE PURCHASED AND ENJOYED.

They are aided by some modern-day technology—walkie-talkies, cell phones, flashlights, and telescopic rifle scopes—but at its core, the trip is the same it has ever been. Their main tools and companions are their horses and sheepherding dogs. They cook over a heavy, cast iron, wood-burning stove, build fires at night to warm themselves and carry a white cloth lean-to tent, supported by wooden branches and rope, that looks like something the Donner Party might have packed. Despite the few amenities, the odyssey remains as physically grueling and dangerous now as before.

As consumers of wool or meat, we are far removed from the animals. Our sweater or lamb chop is simply a commodity to be purchased and enjoyed. Not so for the humans in *Sweetgrass*. Their relationship is deeper and more complex. Though we see them helping to deliver a baby, assisting a newborn to latch on to a nipple or even hand-feeding milk to a lamb via a tube and straw, these animals are decidedly not pets. They are intimate, grappling with them while shearing their wool or straddling them to rustle to a particular pen. But while the farm dog is named Coco and a horse is called Jake, the sheep are numbered and marked with green paint.

The relationship between the humans and sheep ranges from affection, tenderness and protection to outright rage and frustration. In an early scene, before departing on their 150-mile trek to the mountainous pasture lands, one rancher says to a lamb, as he carries him to his mother, “Well, junior, we’ve got to find you some milk. Come here. Oh Lordy, Lordy. There you go.” A bit later, you see a man dressing another young lamb in a custom-fit wool sweater to keep him warm.

THIS SCENE, MORE THAN ANY OTHER, REVEALS THE IMMENSE PHYSICAL AND MENTAL CHALLENGES THAT THIS VOYAGE ENTAILS AND WHY, ULTIMATELY, IT IS BECOMING A THING OF THE PAST.

On the other hand, in a later scene, already deep into the trip, worn down, exhausted and injured, a cowboy fires off curses that would earn this film an R rating. He screams at his wards, telling them they can “eat shit and die,” then calls his mom from a hilltop for consolation. He tells her his dog can’t walk and won’t leave camp, his horse is ribs and bones, his knee is popping, it’s bullshit, the sheep are ornery, and he’s miserable. He is at the end of his rope, on the edge of tears. You feel sorry for him. This scene, more than any other, reveals the immense physical and mental challenges that this voyage entails and why, ultimately, it is becoming a thing of the past.

Before getting off the phone with his mom, Pat tells her that he doesn’t want to grow to hate the mountains. Majestically beautiful when filmed from a distance, their steep slopes, which the sheep love to climb and must be wrangled back from, are forbiddingly dangerous. *Sweetgrass* is gorgeous to behold. It’s obvious why so many cowboy westerns are set in Montana. An image of the two men riding horseback on the crest of a hill at dusk, like shadows, or a morning mist lingering over the precious sweetgrass may stay with you long after you are done watching the movie. And a big part of the film’s soundtrack is the sheep’s conversations. The baas, bleats, mehs, and other bleeping sounds may ring in your ears for some time.

*Sweetgrass*, Tuesday, December 9, 2025 at 7 p.m.

Screening link >

To be added to our mailing list for future screening announcements, please email a request to [plowtoplate@gmail.com](mailto:plowtoplate@gmail.com).

*From October 2025 through March 2026, Plow to Plate is exclusively featuring Grasshopper Film documentaries.*

*Adam Rabiner lives in Ditmas Park with his wife, Dina.*